

Frameless Double Pocket



LEGEND

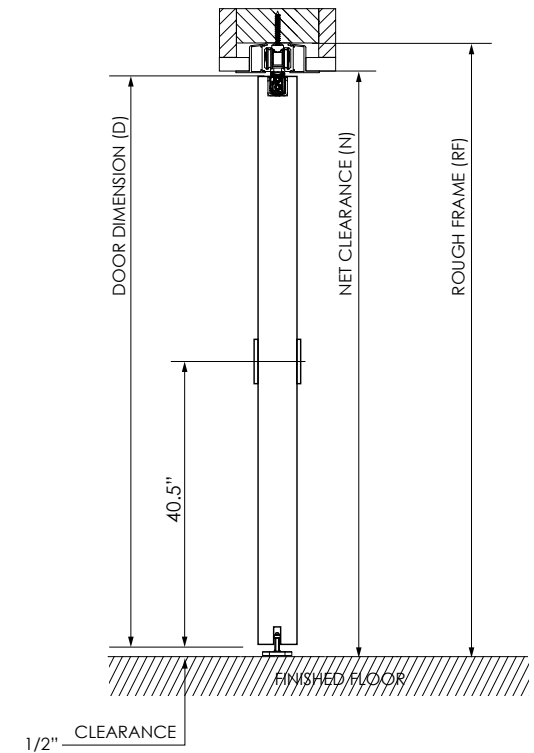
Dimensions in inches

RF	ROUGH FRAME	
D	DOOR DIMENSION	$RF - 1.375$
N	NET CLEARANCE	$RF - 1.1875$

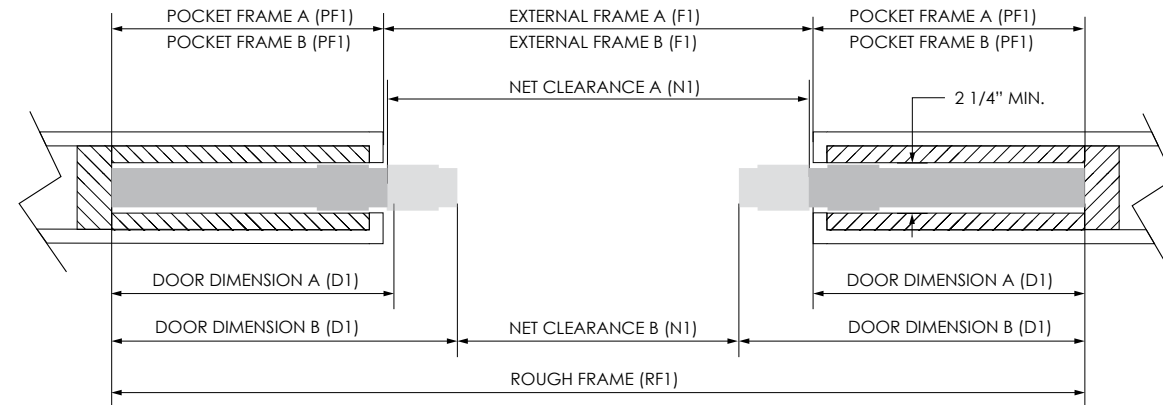
RF1	ROUGH FRAME	
D1 (A)	DOOR DIMENSION	$(RF1 / 4) + 0.25$
F1 (A)	EXTERNAL FRAME	$(RF1 / 2) - 0.25$
N1 (A)	NET CLEARANCE	$(RF1 / 2) - 0.5$
PF1 (A)	POCKET FRAME	$(RF1 / 4) + 0.125$
D1 (B)	DOOR DIMENSION	$(RF1 / 4) + 1.75$
F1 (B)	EXTERNAL FRAME	$(RF1 / 2) + 2.5$
N1 (B)	NET CLEARANCE	$(RF1 / 2) - 3.5$
PF1 (B)	POCKET FRAME	$(RF1 / 4) - 1.25$

*Specifications are subject to change without notice.

SIDE VIEW



TOP VIEW



OPTION A:

- IN OPEN POSITION DOOR IS FLUSH (+1/8") WITH FRAME
- RECESSED EDGE PULL REQUIRED

OPTION B (DEFAULT):

- IN OPEN POSITION DOOR EXTENDS INTO THE OPENING BY 3"